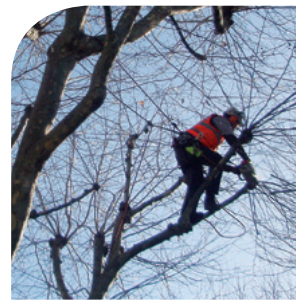




THE QUEEN'S AWARDS  
FOR ENTERPRISE:  
INNOVATION  
2016



*Caring for our Environment*



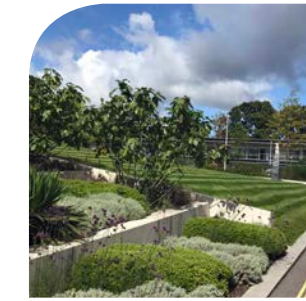
*"Ground Control has done an excellent job...you had to pull sites round from the very poor condition they were in....whenever we phoned, you responded and sorted it out....The guys that look after my sites....have done an excellent job and I mean an excellent job. The sites look the best they have done in 10 years...."*  
**Anglian Water**

## About Us

**Ground Control** was established as a grounds maintenance company in 1973, becoming incorporated as a limited company in 1984. Ground Control's first commercial contract was to provide grounds maintenance to three Tesco stores. Over a period of **25 years of outstanding service delivery at best value prices**, this contract grew to some 600 Tesco stores and a National Partnering Contract for landscape design and build. The company won its first national contract for 1,600 Royal Mail sites in 2003, which created the platform for significant growth.

A systems-driven company, we are renowned for our outstanding service delivery. This has been the linchpin of our business, producing over 99.2% annual client site retention and some 20% growth per year. Our commitment to our staff and our clients is second to none.





*"...the overall standard of landscaping is vastly improved since you took over the contract..."*  
**Travelodge**

## Grounds Maintenance

**Ground Control** maintains all forms of grass areas, shrubbery and hard standing. Whether you invest in immaculately presented lawns to attract millions of visitors or have an industrial estate where maintenance is a necessary expense to the business, Ground Control provides **'fit for purpose'** solutions. We are able to absorb one or thousands of sites, all over the country.

Our experience and expertise enables us to develop maintenance routines to suit individual needs. Our size and **national coverage** bring **economies of scale** with **consequent savings**. You can be confident in our ability to deliver. We provide maintenance schedules, documentary evidence of visits and site audits together with 'Key Performance Indicator Reports' that track our performance. We have invested in robust IT-driven systems, backed up by National Quality Auditors to ensure that we can keep your estate in good order.





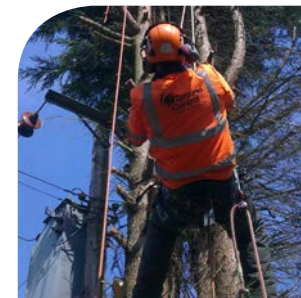
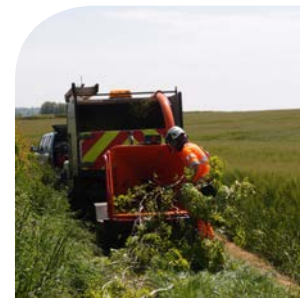
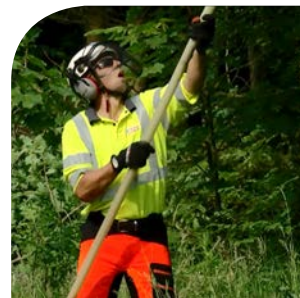
*"I am writing to personally thank you for the tremendous work in assisting with the recovery of services within Kent following the recent extreme stormy weather. You provided your time and knowledge, demonstrating teamwork and determination while ensuring that the work was carried out safely and completed in the quickest possible time. I am extremely pleased that we restored the train service as quickly as reasonably practical."*  
Network Rail

## Arboricultural Services - Rail

Ground Control offers comprehensive **Arboricultural** and **Vegetation Management** services including: tree surgery, tree surveying and integrated tree and vegetation management plans. Our market-tested agreed rates, technical competences, mechanised capability and qualified workforce combine to make compelling savings that you cannot ignore.

Working in the rail sector for over 15 years, Ground Control serves areas across England, Scotland and Wales. Collaboratively working with clients such as Network Rail as Principal Contractor, we are able to help keep Britain connected using our team of highly skilled professional managers and NPTC qualified arborists.





*"Previous companies have given us an indication of the work to be undertaken but your man excelled himself in contacting all who would be affected. The work was carried out professionally and quickly. They cleared up afterwards which was even better as this has never happened before. You can be proud of your team. They've been trained well in their work and their customer service was of an order I have not seen for decades."*

**Western Power Distribution**

## Arboricultural Services - Utility

With over 15 years of experience in providing Arboricultural Services in the Utility sector across the UK, we really do help keep Britain's lights on. We work on LV, 11kV, 33kV and 132kV power-lines and maintain over 20,000km of Overhead Electricity Network.

We survey and analyse data using our bespoke WOODPLAN Tree Management Software, enabling you to easily search, sort and plan. Our WOODPLAN software allows us to accurately reflect the level of infestation present on the network and build an accurate database of landowners. This information is shared with our clients assisting them with the budgeting and execution of other projects.





*"Thanks for the excellent service you provided last night with the first grit of the Dewsbury site. I had a run round this morning and you gritted all the identified areas to a high standard. I look forward to working with you and Ground Control throughout the winter."*

**NHS**

## Winter Maintenance

**Ground Control** provides a fully insured nationwide **Gritting and Snow Clearance** service on a planned preventative basis. We provide a specially tailored service by agreeing a site specific 'Trigger Point' to activate attendance to each of your sites. This trigger is a combination of ground surface temperature and climatic conditions. We receive specialist weather forecasts from the Met Office and other professional forecast suppliers to ensure best possible service delivery. By tailoring your 'Trigger Point' to suit your requirements, we help manage limited budgets. With our Queen's Award winning data capture and live reporting software, you can keep up to date with your service as it happens.

As professional landscapers, we are mindful of the living environment, minimising plant mortality and infrastructure damage by accurate spreading with our specialist vehicle fleet. Our locally-based Field Teams are supported by our 24 hour professional helpline, making your workplaces safer for your employees and customers.





*"My thanks for a job well done....target opening date achieved...only possible through the expertise and professionalism of a sound and reliable team....look forward to working with you again."*  
Taylor Woodrow

## Landscape Construction

As a **multi BALI Award Winner**, Ground Control delivers contracts nationally which include site clearance, ecological mitigation, ground works, hard and soft landscaping, minor civil and maintenance works. Working either as the Principal Contractor or Specialist Sub-Contractor, our clients include local authorities, main contractors, developers, statutory bodies and private clients. We operate in sectors such as the public realm, retail, public parks, housing, infrastructure, leisure and play areas. Our preferred approach is to partner with our clients to **deliver projects safely, on time and within budget to a consistently high standard** with no defects at completion. No matter the size or complexity, Ground Control has the expertise, resources and training to successfully build outstanding landscape projects within the tightest of programmes and budgets.





*"It has been remarked that the building and landscaping has responded well to the industrial and coastal location so Kimberley are very happy and so are we. Thanks for all your help on this project and congratulations on the successful design."*  
**Farrell & Clark LLP Architects**

## Landscape Design & Consultancy

GC Design is our in-house Landscape Institute registered practice providing **Landscape Architecture, Ecological** and **Arboricultural Consultancy** services throughout the UK to a broad range of clients across a multitude of industry sectors.

We seek to provide innovative and creative landscape solutions that respond to the inherent contextual qualities of a site. Our wealth of experience along with a commercial minded, pragmatic approach ensures we deliver design led solutions that meet planning requirements and demonstrates a real understanding of the practicalities of implementing and maintaining landscapes for the future. Whilst working closely within both multi-disciplinary teams or with our own in-house professionals, we pride ourselves on delivering high quality landscape schemes that exceed client expectations which enable us to work across health & education, retail, parks & play, commercial and public realm sectors.







*"Thank you. The team which attended site went about the works in a fantastic manner and were more than willing to go the extra mile to assist both the store and management team to resolve the issue... they worked extremely well in difficult conditions...professionally and efficiently."*

Asda, Abbey Park

## Tree Surveys & Surgery

Offering **national coverage** for surveying and tree surgery, we respond rapidly to our clients' needs. Our combined services offer a unique Tree Management package, advising clients on their Duty of Care, undertaking surveys, analysing data using WOODPLAN Tree Management Software, providing structured management plans and undertaking tree surgery operations. Our qualified arborists use their vast experience, training and technology to deliver cost effective, problem-solving tree management. Decay investigation using a PICUS Tomograph provides a visual report which depicts the internal condition of the tree. Development surveys to BS 5837 provide tailored reports to aid the planning process. Reports include arboricultural impact appraisals, method statements, tree constraints and AutoCad drawings produced by our in-house Landscape Architects.





*"I would just like to pass on our thanks and appreciation from the Poundland Facilities team for the amazing service and hard work that your team have provided in dealing with an extremely complex job in the Inverness store... Their commitment and communication has been fantastic."*  
**Poundland**

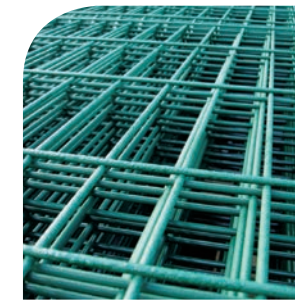
## Roofing

**Ground Control** provides a **nationwide roofing service**, offering the best in commercial roof installations and planned and reactive maintenance. We provide the **beginning to end roofing solutions** with some of the finest products on the market.

Each of our roofing services is managed by technical experts to ensure that you always have the highest quality service. From attending a 24hr reactive call-out, a pre-planned maintenance visit or following a quote request, we can provide recommendations and quotes for all type of roofing.

We have the resources to carry out large and small works expertly, rapidly, and always at a competitive price.





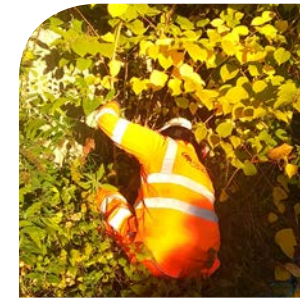
*"...an absolute pleasure to have on site. If all workers...were as helpful, proactive and as courteous...we would have far better and productive sites..."*  
Wates, Waitrose Foss Island

## Fencing

Ground Control provides and installs various types of fencing systems to suit our clients' needs. These include security mesh panel systems, palisades, solid steel or hollow tube railings, acoustic barrier systems, site protective hoarding, close board, decorative timber fencing along with access control and automated gate systems. At all times we work closely with our customers to ensure their needs and expectations are met.

Ground Control undertakes projects ranging from commercial, retail and educational industries through to some of our major leading utility companies providing **outstanding workmanship** and **customer service** through the use of our **skilled industry accredited staff**. In addition, we have achieved Betafence PRO-net chartered contractor status, allowing us to offer a 10 year guarantee on products and installations.





*"Ground Control on a whole has been a pleasure to deal with as no job or task seems too large or too small, their time keeping and communication with us on site has been impeccable ..."*  
**United Utilities**

## *Invasive Weeds Management*

We help our clients with all aspects of **identification, management and control** of invasive species, including Japanese Knotweed, Giant Hogweed, Himalayan Balsam and much more. Our managers are expertly trained in-house to work across the range of possible systems and site types to ensure that our clients can continue to deliver services to their customers all year round. We carry out surveys and develop management plans **bespoke to our clients' requirements**.

At Ground Control, we draw on our considerable experience in dealing with rail, electricity, telecoms, water and gas utilities to demonstrate our expertise in invasive weeds and vegetation management. We're committed to our customers, and can act to identify legal issues where species are invading neighbouring properties and affecting property values.





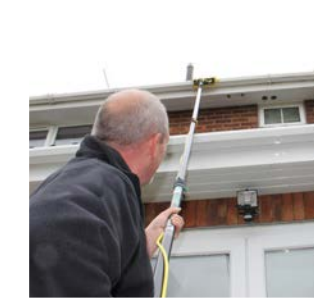
*"...I would just like to thank your guys for their hard work and professional manner. The service users and members of staff were very happy with the minimal disruption while the treatment was being undertaken..."*  
**Healthcare Client**

## Pest Control & Auditing

**Ground Control** offers a unique, **fresh approach** to pest control. We provide existing and new customers with a pest management service that incorporates independent auditing to protect estates, providing the very **highest standard of delivery, professionalism and transparency**.

We provide a range of environmental, biological and physical pest control methods, always delivered by **BPCA qualified teams and auditors**. This includes, rodent control, bird management, specialist cleaning, wildlife management, fly screen and fly control. Visits are recorded using the latest hand-held technology, providing detailed reports and photographic evidence to our clients via logging into our secure web portal.





*"I was amazed how quickly, cleanly and with minimal impact on our customers it was completed...excellent job. Well done guys."*  
Tesco

## Specialist External Cleaning

Ground Control provides **professional, efficient cleaning** from the ground up. Our Specialist External Cleaning service includes gutter cleaning, fascia/signage cleaning, pressure washing, canopy cleaning, and chewing gum removal.

With locally based specialist teams, utilising the latest cleaning technology and hot water systems, we deliver outstanding cleaning results without leaving the safety of the ground. Our specialist cleaning service is tailored to meet all client requirements, always to a high standard.





*"Ground Control responded very quickly and attended site within 24 hours. This had been attended to on several occasions without success but since the service has been provided by Ground Control the situation has not re-occurred. We would highly recommend the service..."*  
**Engie**

## Pothole Repairs

**Ground Control** offers one-visit fix pothole repairs across the country. If you have a pothole problem, our team can offer a quality repair to restore your surfaces, preventing costly damage to vehicles on your premises.

Our **unique product**, imported exclusively for Ground Control and guaranteed for 3 years, allows us to repair potholes in any weather condition quickly and efficiently, and can be driven over immediately with no need for road closures. We offer a safe pothole repair alternative producing **minimal environmental impact** and a **fuss free solution** that is there to stay. Using our bespoke app technology, identified potholes are GPS stamped and logged. We then provide a quote within 48 hours and can be on site to fix your potholes within 5 working days.





*"We noticed that the number of EV drivers increased after we started offering charging, because it enabled people to commute using their EVs."*  
**Raytheon**

## Vehicle ChargePoint Installations

Here at Ground Control, we understand the importance of "caring for our environment" and as experts at architectural landscaping and construction, we have partnered with the world's largest vehicle charging network 'ChargePoint™' to offer **eco-friendly charging solutions for a more sustainable future.**

ChargePoint stations use innovative technology to provide a comprehensive, safe and reliable solution that adds value for your business, customers and employees, whilst helping you establish your brand as a green leader. With a dedicated app, cloud-based station management and flexible payment options, you can be assured that your visitors will always receive a premium experience.





## How can we help you?

*For more information, please contact:*

**Ground Control Ltd**  
Kingfisher House, Radford Way, Billericay, Essex, CM12 0EQ  
E: [info@ground-control.co.uk](mailto:info@ground-control.co.uk) F: 01277 630 746

tel **0800 334 5606**  
[www.ground-control.co.uk](http://www.ground-control.co.uk)

